



Welcome to Today's WCET Webcast



April 30, 2026

The webcast will begin shortly. No audio is being broadcast at this time.

A recording of this webcast will be available on the WCET website next week.

WCET events may not be recorded or rebroadcast without our written consent.

Due to previous issues with repurposed content, AI notetakers will be removed.

We apologize for any inconvenience.



Welcome!



Megan Raymond

Senior Director, Membership and
Programs, WCET

mraymond@wiche.edu

- Slides can be downloaded via the link in chat.
- Please use the Question box for questions and Chat for other information exchange.
- Slides, recording, and shared resources will be emailed to attendees.

Accessibility Commitment

WCET is committed to creating inclusive and accessible materials. Our slides are designed with high-contrast visuals, large text, and descriptive alt text for images.

You can scan the QR code to download the slides (PPT file) on your phone if you prefer.

If you need the slides in an alternative format or additional accommodations, please let us know. We value your feedback to make our content accessible for everyone.





Solving STEM Retention in Online Programs: Experiential Learning That Works

April 30, 2026



Hosted in partnership with:



Labster



● ● ● Today's Moderator

DARCY HARDY

Founder and Chief Strategist
The Hardy Group

darcy.hardy@thehardygrp.com



Speakers



JIM BRUNO

Associate Dean, College of
Business and Information
Technology
University of Phoenix



CHRISTINA FLEMING

Chief Revenue Officer
Labster



MICHAEL K. MOORE

Vice President for
Academic Affairs
University of Arkansas System



ROB ROBINSON

Senior Strategist & COO
The Hardy Group

Attract and Retain

Online and hybrid programs are growing and the experience students have in their first lab course can make or break their decision to stay.

Foundational Courses & DFW Rates

Gateway STEM courses are where many online students are lost first.

Academic Integrity in an AI Era

Experiential, hands-on learning is one of the most reliable ways to ensure authentic student work and reduce opportunities for AI misuse.

Workforce Readiness

Experiential learning doesn't just teach content.
It builds the confidence, skills, and intent that carry
students into STEM careers.



AUDIENCE QUESTIONS



Stay Connected

WCET is the leader in the practice, policy & advocacy of digital learning in higher education.

We envision a future where high-quality digital learning fosters success for educators and learners.

Learn more about the benefits of joining our community:
wcet.wiche.edu/join-us

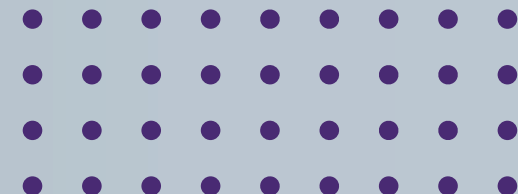
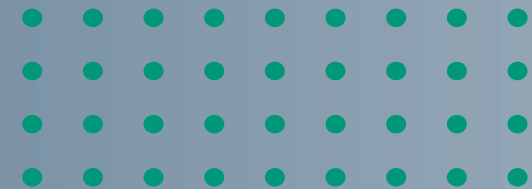
Additional Information and Resources



The webcast recording and additional resources will be available in the next week: wcet.wiche.edu/events/webcasts.



Visit wcet.wiche.edu to explore our Policy and Practice work, Events, Membership, and Sponsorship.



Upcoming WCET Events

Learn more and register: wcet.wiche.edu/events

- Making Assessment Matter: Outcomes at Work Across Institutions – May 13, 1:00 PM MT

Join us in Minneapolis!

WCET 2026

OCTOBER 14-16, 2026

cvent.me/LyZo4B



CHAMPION SPONSOR

Blackboard 



LEADER SPONSOR

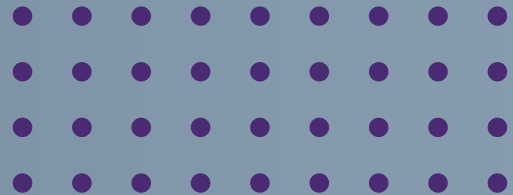


SUPPORTER SPONSOR



Thank You to Our Annual Sponsors

Learn more about the partners that support our work:
wcet.wiche.edu/sponsorship/wcet-sponsors



Thank You to Our Supporting Members

Brigham Young
University

The California State
University

Colorado State
University

Michigan State
University

The University of
Arizona

University of
California

University of
Florida

Supporting members make an additional investment and support WCET's mission to advance the effective use of technology for teaching and learning.

THANK YOU FOR ATTENDING!

