

Welcome to Today's WCET Webcast

August 26, 2025

The webcast will begin shortly.

There is no audio being broadcast at this time.

An archive of this webcast will be available on the WCET website next week.



Welcome!

- Slides can be downloaded via the link in chat.
- Please use the Question box for questions and Chat for other information exchange.
- Slides, recording, and shared resources will be emailed to attendees.

Megan Raymond

Senior Director, Membership & Programs
WCET

mraymond@wiche.edu

Accessibility Commitment

WCET is committed to creating inclusive and accessible materials. Our slides are designed with high-contrast visuals, large text, and descriptive alt text for images.

You can scan the QR code to download the slides on your phone if you prefer.

If you need the slides in an alternative format or additional accommodations, please let us know. We value your feedback to make our content accessible for everyone.





wcet

Webcast

AI Policy in Practice: WCET Survey Insights

August 26, 2025

⋮ Today's Moderator

Van Davis

Executive Director, WCET

Vice President, Digital Learning, WICHE

vdavis@wiche.edu



Speakers



Samuel Jay

Executive Director, Online
Learning, Emergent Technology
& Academic Transformation
Metropolitan State University of
Denver



Cynthia Pascal

Associate Vice President of
eLearning
Northern Virginia Community
College | NOVA Online



Judith Sebesta

Founder and Principal
Sebesta Education
Consulting LLC

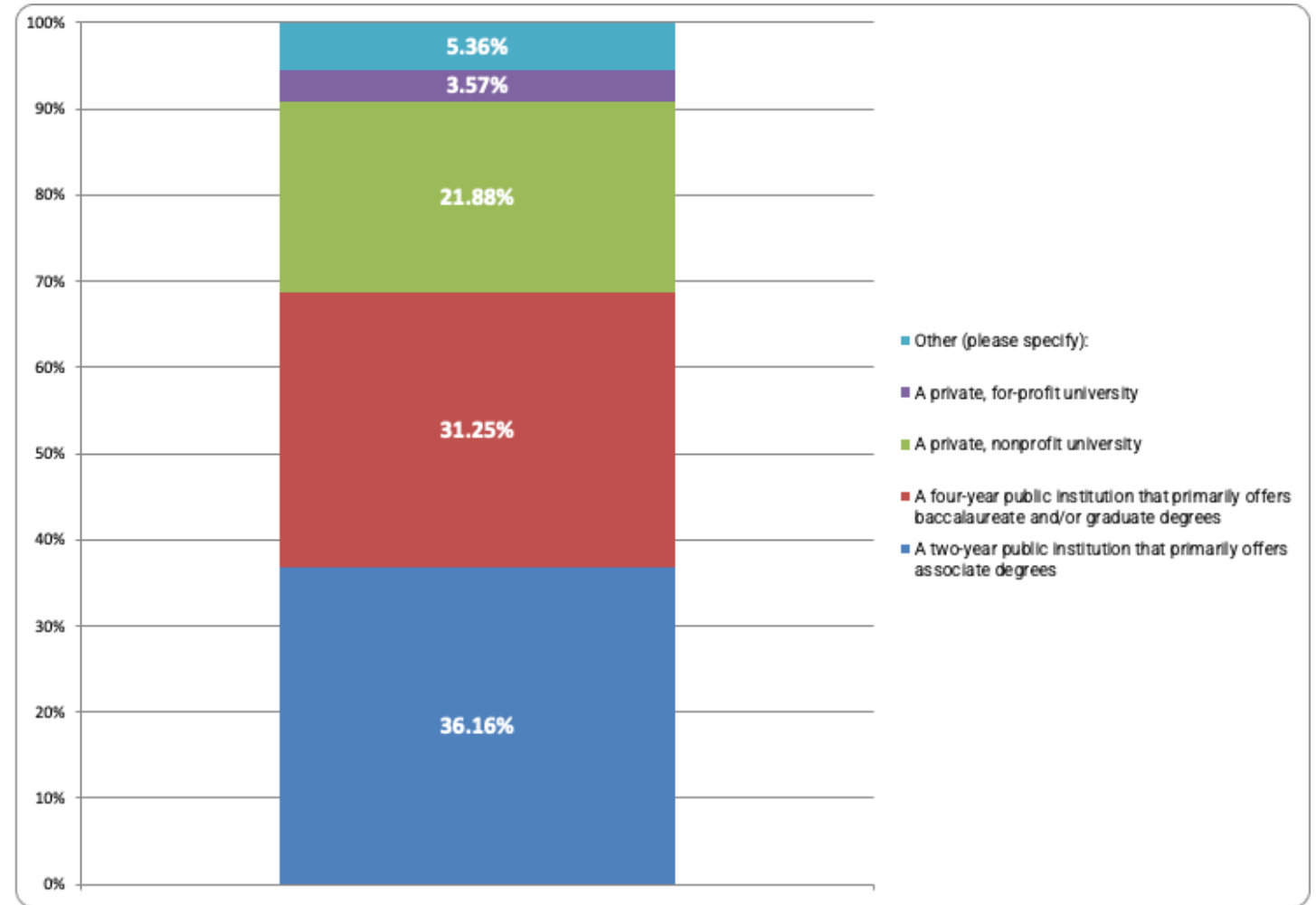
AGENDA

- Snapshot of Survey Respondents
- Key Findings & Insights:
 - Use
 - Support, Incentives & Training
 - Policies & Guidelines
 - Challenges & Benefits
- Recommendations

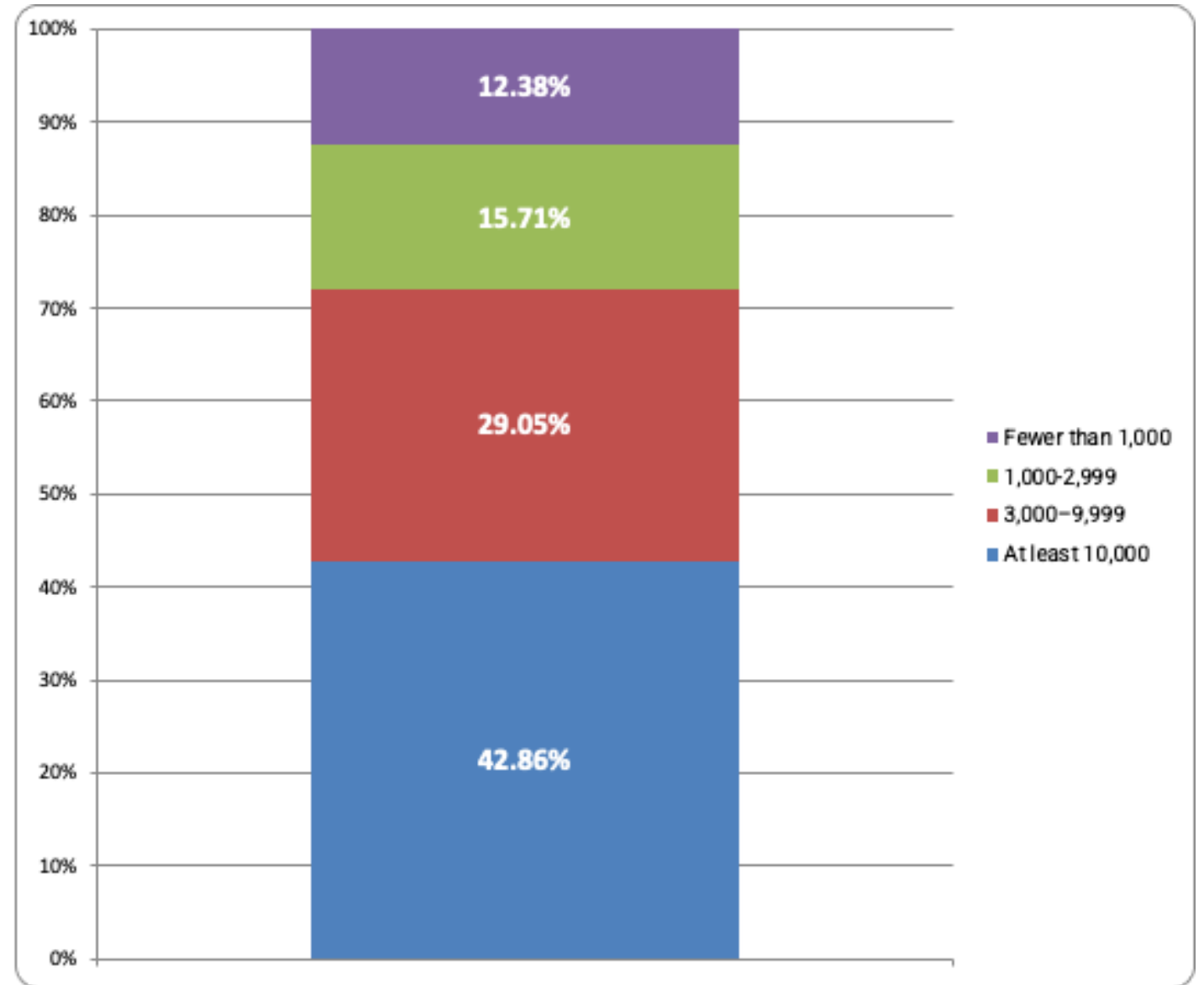
Snapshot of Survey Respondents

224 Total Respondents

Institutional Type



Enrollments



On the left side of the slide, there is a decorative graphic composed of several overlapping, thin black lines that form various geometric shapes, including triangles and polygons, creating a complex, abstract pattern.

Primary Respondent Roles:

- Faculty (20%)
- Instructional and Learning Designer/Engineer (14%)
- Chief Online Learning/Distance Education Officers (12%)
- Center for Teaching/Learning Effectiveness Administrators or Related Staff (12%)
- Dean/Assistant or Associate Dean (8.5%)
- Chief Academic/Instructional Officers/Provosts (7.5%)

Key Findings & Insights



Use

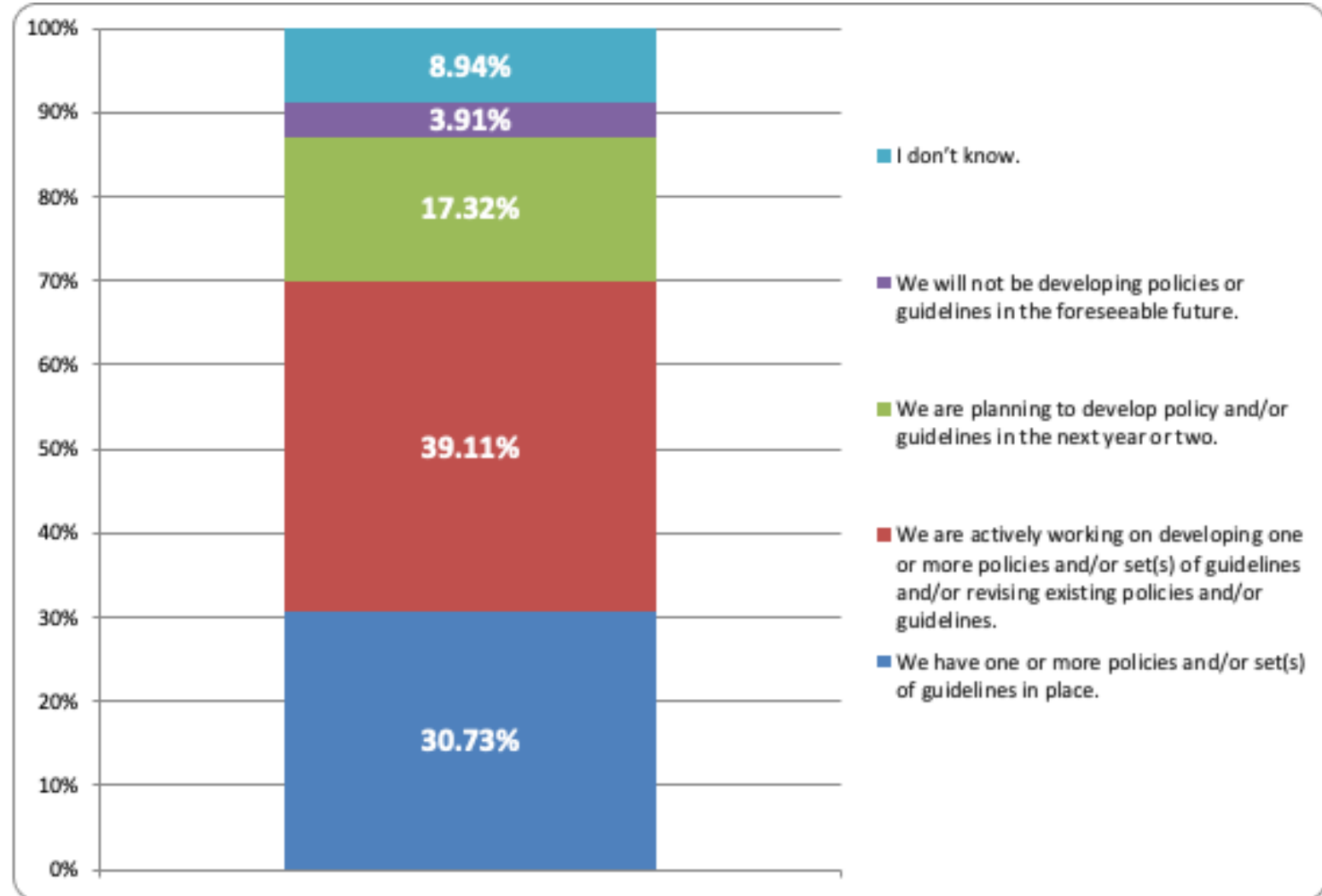
- A majority of institutions are at a "slightly mature" stage of AI use.
- Instruction and learning is the most prominent area of use, but AI use to support operations and governance is expanding.
- Compared to the 2023 survey data, there's a noticeable increase in AI adoption and strategic planning.
- Lack of knowledge among administrators, staff, and especially faculty, is the primary reason some institutions are *not* using AI.

Support, Incentives, & Training

- Faculty champions play a crucial role in supporting effective AI adoption, even with some skepticism among faculty about AI efficacy. However, dedicated AI task forces and committees are nearly as important in supporting AI initiatives.
- A majority of institutions still do not offer incentives to encourage AI use, although there has been an increase from the previous survey in institutions that do.
- Training for faculty is more prevalent than training for other campus groups, perhaps suggesting a focus on AI use in instruction and learning.
- Nearly one-third of respondents reported that their institution does *not* offer training for students.

Maturity of Policy Development

A majority of surveyed institutions either have existing AI policies or are developing AI policies.



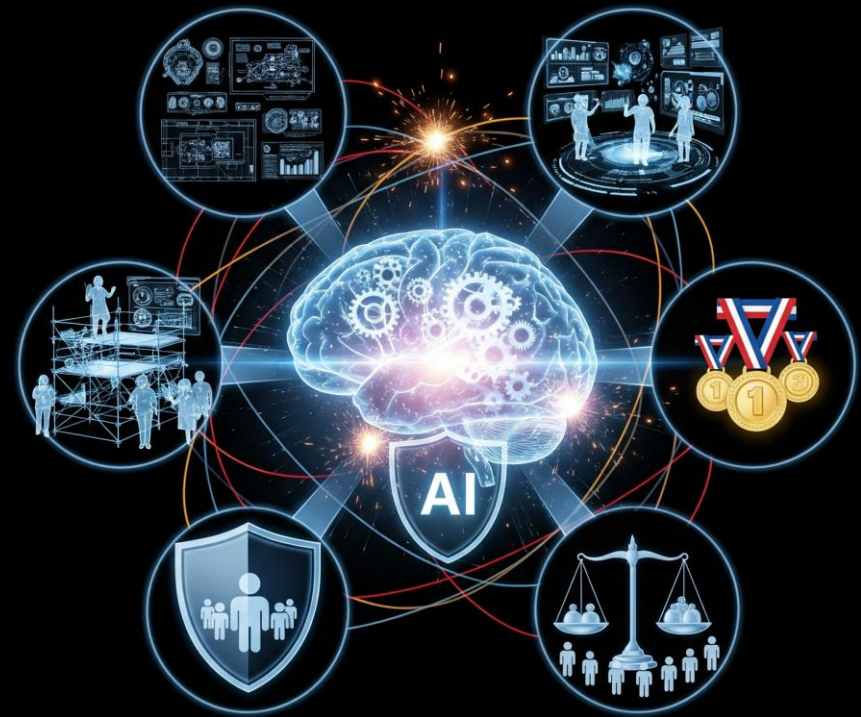
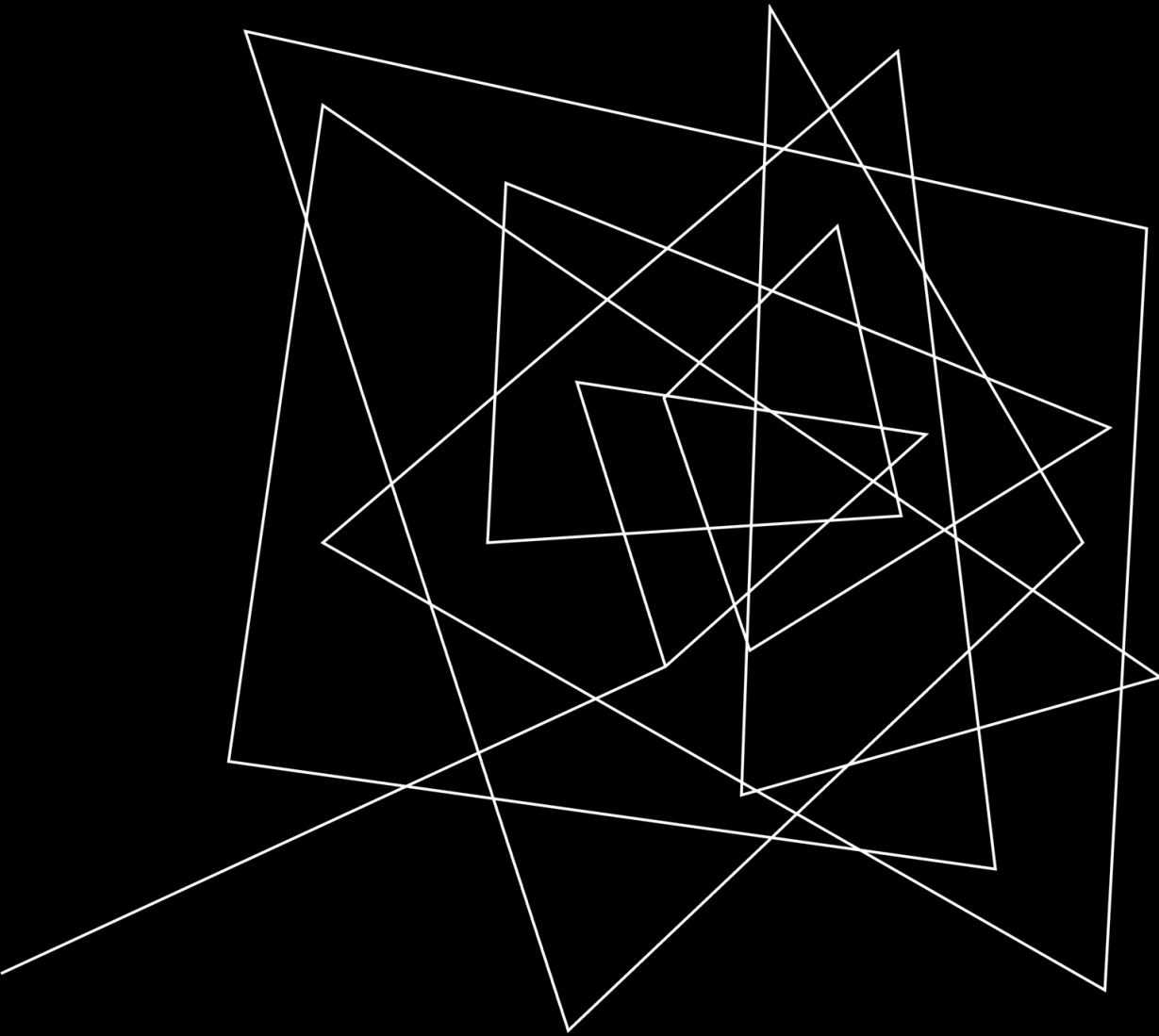
Policies & Guidelines

- Additionally, there has been a notable increase in the number of institutions with established AI policies since our 2023 survey.
- Some institutions, however, are choosing more flexible and adaptable guidelines and frameworks over policies.
- Policies and guidelines around academic integrity/plagiarism are the most common type of AI policy. This shows a substantial growth from the previous survey, indicating a rapid increase in such policies.
- Responses suggested a possible tension between faculty autonomy in developing and implementing classroom policy, and the need for adoption of more holistic, campus-wide policies and guidelines.

Challenges & Benefits

- Institutions continue to struggle with insufficient AI knowledge among staff and faculty, as well as widespread distrust and skepticism towards AI technologies.
- Concerns around academic integrity and plagiarism remain significant and consistently high, demanding ongoing attention and solutions.
- The environmental impacts of AI are emerging as a new issue for higher education to address.
- While "teaching critical digital skills" was the top benefit of AI identified in 2023, "efficiency" is now seen as the most frequent benefit, showing a focus on practical AI applications.
- There's a rapid acceleration of AI integration.

Recommendations



Recommendations

1. Develop Comprehensive Policies and/or Guidelines
2. Invest in AI Literacy and Fluency Training
3. Establish Support Structures
4. Offer Incentives
5. Coordinate AI Use Across Curricula
6. Address Challenges Proactively
7. Promote Ethical and Equitable Use
8. Expand Student Training
9. Leverage AI for Operational Efficiency
10. Encourage Experimentation

Questions from the Audience



Additional Information and Resources

The webcast recording will be available in the next week:
wcet.wiche.edu/events/webcasts.

Visit wcet.wiche.edu to explore our Policy and Practice work, Events, Membership, and Sponsorship.

Stay Connected with WCET

WCET is the leader in the practice, policy & advocacy of digital learning in higher education.

Learn more about the benefits of joining our community:
wcet.wiche.edu/join-us



Join us in Denver, Colorado

WCET 2025: October 21-23

SAN Coordinators: October 20

ASWE Rise: October 23-24

bit.ly/wcet-2025

Thank you

Learn more about our annual sponsors:

[wcet.wiche.edu/
sponsorship/wcet-sponsors](https://wcet.wiche.edu/sponsorship/wcet-sponsors)

Champion Sponsor



Leader Sponsor



Friend Sponsor



Supporter Sponsor



... — Supporting Members — ...

Brigham Young
University

The California State
University

Colorado State
University

Michigan State
University

The University of
Arizona

University of
California

University of
Florida

Supporting members make an additional investment and support WCET's mission to advance the effective use of technology for teaching and learning.



Thank you for attending!

wcet.wiche.edu