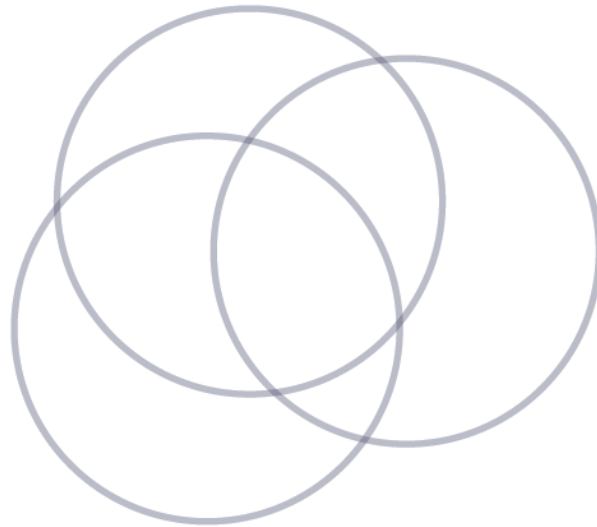

WCET 32nd Annual Meeting Seminar Series

Inclusiveness in Higher Education



For years, the higher education community has discussed how to create a culture of inclusiveness. How can we act on those ideas to achieve meaningful change?

This seminar takes place in a synchronous and asynchronous format over the course of two weeks from October 6-15. Sessions are scheduled for Tuesday, Wednesday, and Thursday of each week.

Keynote

Join us in welcoming our keynote speaker, Newton Miller, the Associate Dean of the College of Education at Ashford University.

October 7, 2020

**Opening Keynote: Why Some Seeds Don't Grow –
What Works to Ensure Student Success**

9:00am - 10:00am MDT

We are all inspired to do more, to make meaningful change, but what does effective action look like and what can we do as a community? Learn about proven strategies for supporting “at potential students” in online and face-to-face environments.

Make the most of #WCET2020

We are so glad you are joining us for the WCET 32nd Annual Meeting from afar. We know that virtual convenings have both advantages and challenges, and just like with face-to-face classes and conferences, there are always competing demands. To make the most of the Seminar series, here is our advice to maximize your investment and time. To maximize your experience, we encourage attendees to:

Participate

- Attend sessions live if possible, catch the ones you miss via the recordings.
- Because we are recording all breakouts, you can attend one live and watch others later.
- We have built flexibility into the schedule so you can attend to your other critical responsibilities. We hope this helps you stay present during the live sessions.

Reflect

- Reflect on what you learned, including what challenged you.
- Add your reflections to our daily Padlet boards or reflect on your own. The boards will help weave together key themes we need to further explore.

Connect

- It is hard to replicate the networking and hallway chats of face-to-face conferences in a virtual event. However, we have intentionally added discussion opportunities to the program because we know it is invaluable to connect and share experiences with your colleagues.
- Join the small group discussions during each day of the seminar.
- Add your questions, experiences, and take-a-ways to the chat.
- Participate in the focus group work, where your cohort will develop an asset to share with the broader higher education community. Time for this work is included in the program, so no time outside of the Seminar should be needed. Assets could be short YouTube videos, webcasts, one-page overviews, etc.
- The daily networking activities are designed to be fun ways to connect with other attendees.

Ask for Help

- The WCET team prides itself in being incredibly responsive. Let us know how we can help.
- The WCET Community is known for being collaborative and friendly so don't hesitate to ask for advice or lessons-learned throughout the Seminar.

Learn and Have Fun

The WCET Seminar Series should challenge you to think in new ways, explore new ideas, and be fun! We hope the activities, including gamified participation points towards prizes, the variety of sessions, and networking options will create a valuable and enjoyable experience for all attendees. See you there!



BibliU



BibliU is a digital education platform that **brings textbooks to life**, making student **learning more effective**.



Market-leader in **Accessibility and Usability**



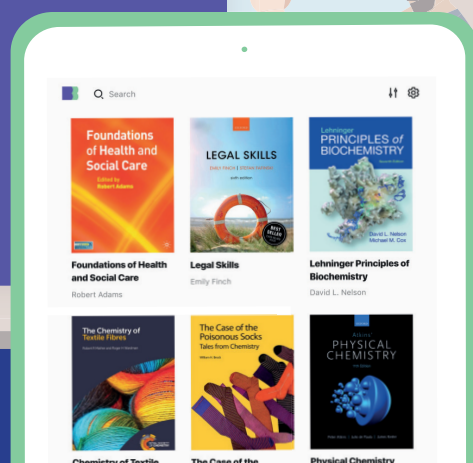
Analytics to **measure student engagement**



Bespoke purchasing models for institutions

- Highlights and Searchable Annotations
- 'Google-like' Search
- SSO and LTI Integration
- Online-offline Access

bibliu.com
sales@bibliu.com



About WCET and Our Initiatives

WCET - the WICHE Cooperative for Educational Technologies, is the leader in the practice, policy, and advocacy of digital learning in higher education. WCET seeks to equip higher education personnel with the policies and practices needed to effectively and efficiently experiment with, develop, and support educational technologies that enhance learning for all students. WCET's growing membership includes almost 400 institutions, higher education agencies and systems, nonprofit organizations, government agencies, and corporations in all U.S. states and several Canadian provinces. The cooperative provides members with resources and analysis as well as facilitating avenues for members to communicate with each other and act cooperatively to identify common needs, track emerging policies and practice, evaluate efficacy, and share lessons learned.

WCET's **State Authorization Network (SAN)** is the leader for guidance and support for understanding regulatory compliance of out-of-state activities for postsecondary institutions. SAN provides their members access to experts, networking among others seeking to comply, and collaborative resources that ensure institutions are properly managing compliance requirements.

The OER Initiative at WCET is focused on reducing the cost of higher education and improving student outcomes through the implementation of open educational resources (OER). Unique in the OER community, WCET works with the regional compacts (WICHE, NEBHE, MHEC, SREB), state agencies and higher education systems to conduct research, design grant programs and initiatives, and provide guidance on regional and statewide OER policy and project implementation. The OER Initiative brings together OER leaders, champions, legislators, state higher education systems, and educational technologists with the goal of sharing, developing, and promoting best practices and policies on the adoption, implementation, scalability, and sustainability of OER and zero-cost curricula.

WCET is the intermediary organization for **Every Learner Everywhere**, a network centered on the transformation of digital learning in postsecondary institutions to advance equity in higher education and improve student outcomes for Black, Latinx, Indigenous students, low-income students, and first-generation students. Funded by the Bill & Melinda Gates Foundation, Every Learner's network is made up of 12 partners actively engaged in evaluating, implementing, scaling, and measuring various products and services in the digital learning space.

Supporting Members

Thank you to the following institutions and organizations that have signed up at the "Supporting Member" level to help advance WCET's work. Your commitment to WCET and our shared interest in improving the quality and reach of technology-enhanced teaching and learning in postsecondary education is greatly appreciated!

- Colorado State University
- Cooley, LLP
- Michigan State University

To learn more about the Supporting Member option, visit our [member dues page](#).

About WICHE

WCET is a unit of the Western Interstate Commission for Higher Education (WICHE), which since 1953 has served the diverse higher education priorities of states, students, and institutions in the Western region of the United States. WICHE's programs and efforts:

- Help students pursue higher education affordably and conveniently.
- Accelerate the region-wide sharing of ideas and resources to help states and institutions improve their educational systems, services, workforce.
- Provide expert research and policy guidance for legislators and educational leaders in diverse niches including access and attainment, governance, behavioral health, demography, and education technology.
- Prepare universities, colleges, and communities to thrive amidst rapid change.

WICHE is one of four regional interstate compacts in the United States established by Congress. Based in Boulder, Colo., WICHE is funded by legislatures of its members—who reap strong returns on investment from WICHE programs—and by grantmakers and others who share our desire to overcome the education and workforce challenges of tomorrow. Learn more on the [WICHE website](#).

Exhibitors

Throughout the virtual event, you will have the opportunity to visit our exhibitors. You will see on the schedule when there are breaks that allow you time to visit them. Be sure to stop by the virtual exhibit hall to connect with our amazing sponsors and exhibitors! Earn 25 gamification points per exhibitor, visit each booth for their unique code. See the list of the exhibitors below:

- BilibU
- Biometric Signature ID
- Blackboard
- Cengage
- iDesign
- Innovative Educators
- MindEdge Learning
- Pragya Systems
- Quottly
- Soomo
- Straighterline
- Turnitin
- VitalSource
- Wiley | Education Services



We focus on **quality in an ever-changing online learning landscape.**

Our unique, fee for service iDesign approach helps colleges and universities harness the potential of emerging technologies to design courses and degrees that make an impact, whether they're fully online, flipped, adaptive, blended, or competency-based.

We measure success in superior faculty experiences, happy administrators, student outcomes, and growing enrollment.



iDesignedu.org

Social Media

- Follow us on Twitter [@wcet_info](#). Follow the conference using the backchannel #WCET2020
- [Like us!](#) Post your updates, add photos, and stay up-to-date!
- Follow our blog, [WCET Frontiers](#).
- Follow us on [LinkedIn](#).
- Follow our [YouTube channel](#).

WCET MIX

wcetMIX is WCET's online platform for members to discuss important topics and ideas and to share news, announcements, articles, and events. MIX provides the opportunity for member engagement, community building opportunities, and options for finding and using the archives of our WCETDiscuss and WCETNews email lists. Members, if you are not in MIX, let us know and we will get you signed up.



Courseware that works

Modern. Simple. Designed for learning.

- / Tailored to your outcomes
- / Active learning on every page
- / Activity analytics help you keep tabs on learning
- / Built-in accessibility ensures universal access

 **soomo**

For more information, or to schedule a demo:
soomolearning.com | (888) 834-7223 | hello@soomolearning.com

WCET 32nd Annual Meeting Virtual Seminar Series

Seminar 1, Week 1: Inclusiveness in Higher Ed

The seminar times listed below are all in Mountain Daylight Time.

Tuesday, October 6

Recommend Topics for Work Groups

8:00am - 5:00pm

Welcome to the Work Group portion of the Seminar! Groups will form cohorts based on topics and collaborate on developing timely resources for the community. Share the topics related to Inclusiveness that you are most interested in working on. The more specific the better. Share your suggestions for outputs (i.e. YouTube video, webcast, resource guides, etc.). The outcome of your collaboration will be shared with WCET Annual Meeting attendees at a later date.

Vote on topics by liking the Padlet post. Voting is open until 5:00 MT on Wednesday, October 7, after which final topics and ideas for outputs will be determined. You'll be able to sign up and meet your work group team members on October 8.

If you'd like to volunteer to be a group leader, email knawrocki@wiche.edu.

Work Groups

Post Daily Reflections and Follow Up Questions

8:00am - 5:00pm

Post to Discussion

Exhibit Hall

8:00am - 5:00pm

Be sure to stop by the virtual exhibit hall to connect with our amazing sponsors and exhibitors! Earn 25 gamification points per exhibitor, visit each booth for their unique code.

Recommend Topics for Open Forum Discussion

8:00am - 5:00pm

Let us know what you want to discuss during the Open Forum on Tuesday, October 13. Be sure to vote! Voting closes at 5:00 pm MT on Thursday. Topics with the most likes will be used as prompts next Tuesday.

Post to Discussion

Networking Activity: Meet and Greet

8:30am - 8:50am

Networking Activity

Break

8:50am - 9:00am

Tuesday, October 6

Welcome and Topic Overview: Inclusiveness in Higher Education: From Notion to Action

9:00am – 10:00am

Moderator

- Jessica Rowland Williams, Director, Every Learner Everywhere, WCET

Speakers

- Russ Poulin, Executive Director, WCET
- Amelia Parnell, Vice President for Research and Policy, NASPA
- Deborah Santiago, Chief Executive Officer, Excelencia in Education
- Eboni Zamani-Gallaher, Professor and Director of the Office for Community College Research and Leadership (OCCRL), University of Illinois at Urbana-Champaign

Hear from experts about inclusiveness including understanding identity theory, bias, and the role technology plays in perpetuating inequity, inequality, exclusion. What are some demonstrated good practices and how can we catalyze positive change?

General Session

Break/Exhibit Hall

10:00am - 10:30am

Open Forum: Sharing Stories of Lessons Learned

10:30am - 11:15am

Within small groups share what you've seen successfully work or what was attempted, failed, and takeaways.

Open Forum

Break

11:15am - 11:30am

Breakout Sessions

The NCWIT Tech Inclusion Journey: Building Inclusive Culture in Undergraduate Programs

11:30am - 12:15pm

Moderator

- Lindsey Downs, Assistant Director, Communications and Community, WCET

Speakers

- Gretchen Achenbach, Research Scientist, National Center for Women & Information Technology (NCWIT)
- Beth Quinn, Senior Research Scientist, National Center for Women & Information Technology (NCWIT)

The Tech Inclusion Journey, developed by the National Center for Women & Information Technology (NCWIT), is a set of online tools and resources that helps change leader teams learn, assess, build consensus, and strategically plan in order to recruit a diverse range of students and build an inclusive culture in their undergraduate computing programs. Although developed for computing, the general approach is applicable to other disciplines.

Breakout Sessions



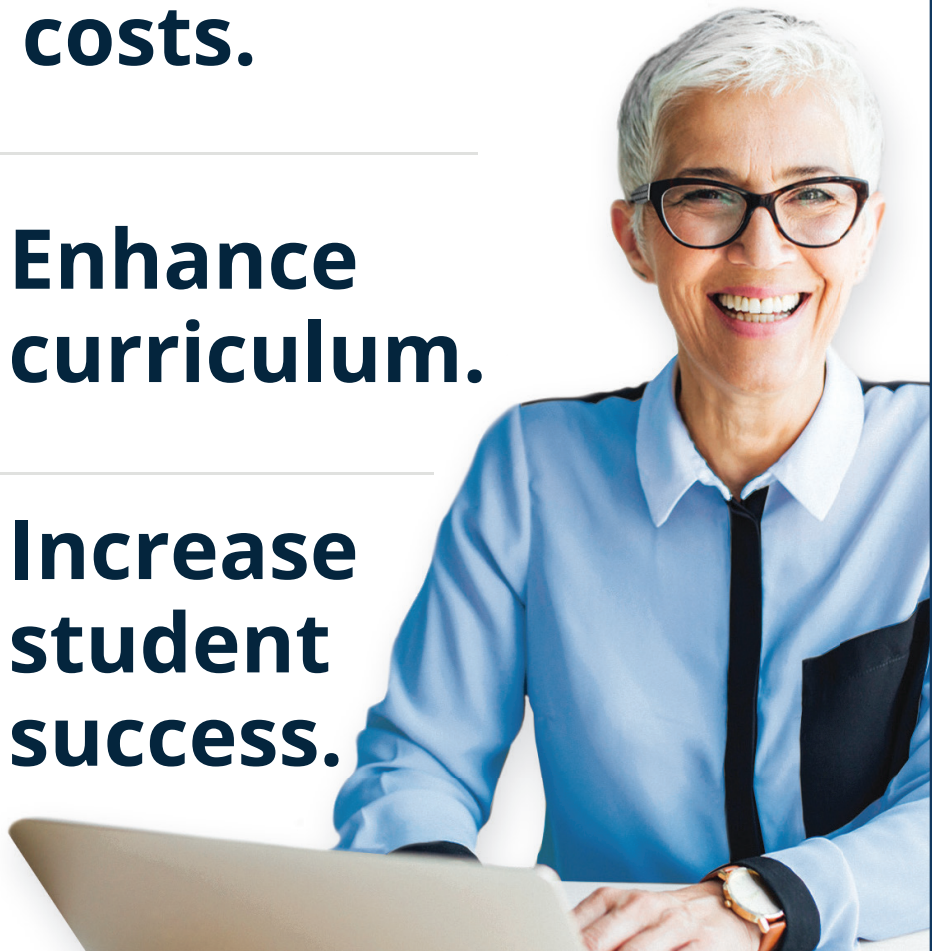
Lower costs.



Enhance curriculum.



Increase student success.



cengage.com/institutional

Tuesday, October 6

The Technology Access Gap and Creative Solutions

11:30am - 12:15pm

Moderator

- Judith Sebesta, Executive Director, Digital Higher Education Consortium of Texas (DigiTex)

Speakers

- Mordecai Brownlee, Vice President for Student Success, St. Philip's College
- Nate Southerland, Provost and Chief Academic Officer, Coconino Community College

The digital divide became a wider abyss for many students as institutions moved to remote learning in Spring 2020 in the midst of COVID-19. Internet deserts are seeing the potential for broadband connectivity diminish as localities face dire budget implications and national efforts seem idle. Beyond connectivity, access to devices and technology are a roadblock to many. Knowing your students and faculty and how best to support them is critical. Join our panelists as they discuss the digital and technology divide, policies, and strategies.

Breakout Sessions

Break/Exhibit Hall

12:15pm - 1:00pm

Network Activity: BYOP

3:00pm - 4:00pm

Ever had your pet or favorite person make a surprise appearance on a Zoom call? Now is the time to extend an official invite and have them join in this informal networking. Groups will be randomly assigned via Zoom breakouts. We hope you use video!

Networking Activity

Wednesday, October 7

Select Top Choices for Work Groups

8:00am - 5:00pm

Welcome to the Work Group portion of the Seminar! Groups will form cohorts based on topics and collaborate on developing timely resources for the community. Share the topics related to Inclusiveness that you are most interested in working on. The more specific the better. Share your suggestions for outputs (i.e. YouTube video, webcast, resource guides, etc.). The outcome of your collaboration will be shared with WCET Annual Meeting attendees at a later date.

Voting is open until 5:00 MT on Wednesday, October 7, after which final topics and ideas for outputs will be determined. You'll be able to sign up and meet your work group team members on October 8.

If you'd like to volunteer to be a group leader, email knawrocki@wiche.edu.

Post to Discussion

Post Daily Reflections and Follow Up Questions

8:00am - 5:00pm

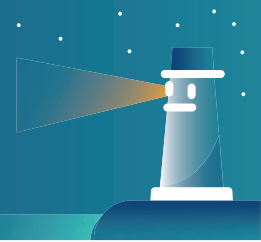
Post to Discussion

Exhibit Hall

8:00am - 5:00pm

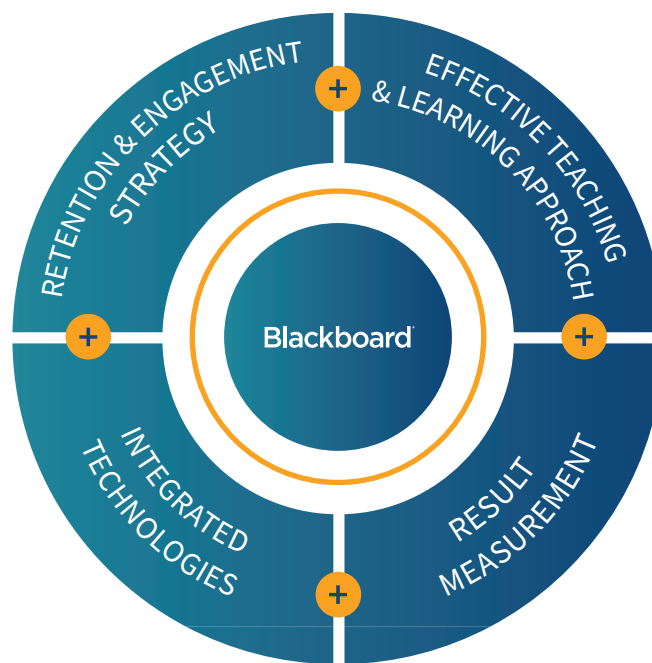
Be sure to stop by the virtual exhibit hall to connect with our amazing sponsors and exhibitors! Earn 25 gamification points per exhibitor, visit each booth for their unique code.

Lead your institution through the new normal and beyond



Today's learners and faculty have high expectations, requiring an integrated and flexible learning experience that operates seamlessly and intuitively. By partnering with Blackboard, you can enhance your institution's brand by providing students and faculty with a holistic and integrated modern learning ecosystem.

Blackboard brings together the technologies and services you need to lead your institution through this digital transformation.



Learn more at blackboard.com

Blackboard

Wednesday, October 7

Networking Activity: Birds-of-a-Feather Social 8:30am - 8:50am

Start the day by connecting with others with similar job titles.

Networking Activity

Break

8:50am - 9:00am

General Session

**Opening Keynote: Why Some Seeds Don't Grow –
What Works to Ensure Student Success**

9:00am - 10:00am

Moderator

- Vernon Smith, Provost, American Public University System

Speakers

- Newton Miller, Associate Dean of the College of Education, Ashford University
- Russ Poulin, Executive Director, WCET

We are all inspired to do more, to make meaningful change, but what does effective action look like and what can we do as a community? Learn about proven strategies for supporting “at potential students” in online and face-to-face environments.

General Session

Break/Exhibit Hall

10:00am - 10:30am

Breakout Sessions

Supporting LGBTQ+ Students and Staff

10:30am - 11:15am

Moderator

- Katie Fitzsimmons, Director of Student Affairs, North Dakota University System

Speakers

- Devika Choudhuri, Professor, Counseling Program, Eastern Michigan University
- Jason Taylor, Assistant Professor, University of Utah

Choudhuri and Taylor will engage attendees in a discussion about the factors and stressors that LGBTQ+ students are experiencing in an online learning environment due to the pandemic. Drawing from our recent book, Rethinking LGBTQIA Students and Collegiate Contexts: Identity, Policies, and Campus Climate, we will use an intersectional lens to discuss these factors and share actionable strategies that colleges and universities can employ to ensure that diverse LGBTQ+ students are healthy and successful.

Breakout Session

**Student Speak: Equity Reality from Students of Color,
Low-Income, and First-Generation Students**

10:30am - 11:15am

GlobalMindED and Every Learner Everywhere Ambassadors

Moderator

- Jessica Rowland Williams, Director, Every Learner Everywhere, WCET

Student Panelists

- Rontavious Coley, Student, Georgia Highlands College
- Claudia Morales, Student, William Paterson University
- Dominik MorningDove, Student, Fort Lewis College
- Jessie Thompson, Student, Linfield University

Institutions of higher education find themselves trying to deliver a quality education amid a global pandemic and difficult conversations about race and equity. We face a pivotal moment in higher education that can either widen the equity gap, or bridge it. Amid the COVID-19 pandemic and shift to remote learning, colleges and universities face new challenges in delivering a quality digital education that is accessible, adaptive, and equitable – particularly for traditionally underserved students of color, low-income students, and first-generation students. The change needed for these students starts with a conversation about how to close those gaps through advances in digital courseware that serves the needs of today’s students. By talking about the equity gaps in college degree completion that exist for students of color, first-generation, and low-income students, and by sharing the voices of these students, we can respond to the pandemic in a way that improves digital teaching practices for faculty and outcomes for students. Join Jessica Rowland Williams, director of Every Learner Everywhere, and our panel of students who are part of the GlobalMindED 2020 Leadership Class and the Equity Project, as they ‘reverse the classroom’ with a discussion to teach faculty and other stakeholders understand the latest research, as well as their personal and educational experiences that make them so passionate and knowledgeable about the need to serve students.

Breakout Sessions

Break **11:15am - 11:30am**

Networking Activity: Virtual Lunch **11:30am - 12:00pm**

Eating at your desk is no longer frowned upon! Bring your sammy and other brown bagged goodies to our networking lunch. Groups will be randomly assigned. Enable video to mimic the true conference experience without the weird butter pats and hard rolls.

Networking Activity

Open Forum: What Have you Experienced at Your Institution? **12:00pm - 1:00pm**

What have you experienced personally and professionally at your institution that has driven you to pursue inclusiveness? Share your story of challenge and impact in small groups.

Open Forum

Break/Exhibit Hall **1:00pm - 1:30pm**

Networking Activity: BYOB **3:00pm - 4:00pm**

By now you should be seeing some familiar faces in the networking and breakout sessions. Share your favorite Book or Beverage with your new friends, even better if you have the item in hand and video on.

Networking Activity

MindEdge is proud to
be a Friend of WCET



Thursday, October 8

Sign Up for Work Groups and Introduce Yourself **8:00am - 5:00pm**

Sign up in the Work Groups area. Share your suggestions for outputs (i.e. YouTube video, webcast, resource guides, etc).

Work Groups

Post Daily Reflections and Follow Up Questions **8:00am - 5:00pm**

Post to Discussion

Exhibit Hall **8:00am - 5:00pm**

Be sure to stop by the virtual exhibit hall to connect with our amazing sponsors and exhibitors! Earn 25 gamification points per exhibitor, visit each booth for their unique code.

Networking Activity: Morning Recharge and Self Care **8:30am - 9:00am**

This is a chance to reflect and recharge. Pick your breakout: 1) walk and talk, 2) gentle stretching 3) Zumba 4) Take 30 minutes to do your own self care.

Networking Activity

Your Experiences Shape Your Perspective, How Are Our Journeys Similar and Different **9:00am - 10:00am**

Moderator

- Laura Pedrick, Executive Director, UWM Online, University of Wisconsin-Milwaukee

Speaker

- Jessica Rowland Williams, Director, Every Learner Everywhere, WCET

Through this interactive session, we'll identify our own unique advantages, reflect on college experiences, and realize patterns of success and challenge.

General Session

Break/Exhibit Hall **10:00am - 10:30am**

Thursday, October 8

Breakout Sessions

Strategic and Thoughtful Accessibility during Covid and Beyond

10:30am - 11:15am

Moderator

- Cheryl Dowd, Director, State Authorization Network, WCET

Speaker

- John Jones, Director, Media Resources Center, Wichita State University

Practical, effective, and implementable actions for serving all students, especially as we are forced to move to remote learning.

Breakout Session

Technology's Role in Improving Diversity, Access, and Inclusion

10:30am - 11:15am

Moderator

- Brad Griffith, Director, Online Learning Initiatives, Oklahoma State Regents for Higher Education

Speaker

- Gloria Niles, Director of Distance Education & Coordinator, Office of Professional Development and Academic Support, University of Hawai'i - West O'ahu

Effective teaching is never about the tool itself, but how can the effective use of technology help support inclusive community construction and supporting diverse students? Cultural awareness, universal design, assessing diversity of materials and resources.

Breakout Session

Well-Being for Faculty and Staff and Cultivation of Student Support

10:30am - 11:15am

Moderator

- Jory Hadsell, Executive Director, California Virtual Campus (California Community Colleges)

Speaker

- Nathaan Demers, Vice President and Director of Clinical Programs, Grit Digital Health

Supporting a culture of well-being on campus requires ensuring that each and every member of the community has access to mental health and well-being supports. While a wealth of digital well-being support services exist for students, there is a dearth for faculty/staff. With this understanding, the University of Colorado Denver & Anschutz Medical Campuses partnered with a digital start-up to research and develop a well-being platform to support the unique needs of faculty/staff. The tool supports faculty and staff wellness and also provides a wealth of resources to help faculty/staff better support students of intersecting identities. The session will overview key insights from the joint team's research process and provide an overview of the intervention with actionable insights that attendees can implement on their campus.

Breakout Session

Break

11:15am - 11:30am

Thursday, October 8

Open Forum: Sharing of Good Practices **11:30am - 12:15pm**

Discuss in small groups demonstrated good practices and elements that can scale.
Encouraged to share resources.

Open Forum

Break/Exhibit Hall **12:15pm - 1:00pm**

Networking Activity: #WCET2020 Lingo Bingo **3:00pm - 4:00pm**

If you have not played Zoom bingo yet you have not been making the most of competitive Zooming during the pandemic. A link to a virtual bingo card will be provided and the words will be called out. Once you get a bingo let us know in the chat.

Networking Activity

Seminar 1, Week 2: Inclusiveness in Higher Education

Tuesday, October 13

Post Daily Reflections and Follow Up Questions **8:00am - 5:00pm**

Post to Discussions

Focus Area Work **8:00am - 5:00pm**

Go to the Work Groups area to join your group. Determine: Goals, Output, Timeline. Begin sharing resources and assigning work.

Work Groups

Exhibit Hall **8:00am - 5:00pm**

Be sure to stop by the virtual exhibit hall to connect with our amazing sponsors and exhibitors! Earn 25 gamification points per exhibitor, visit each booth for their unique code.

Networking Activity: Virtual Coffee **8:30am - 9:00am**

Although we can not provide the giant pastries and endless cups of coffee typical of an in person conference, you can still participate in coffee conversations. Grab your pumpkin spice latte or Earl Gray tea, turn on video, and chat with the other attendees. What have you learned that you are eager to share with your institution?

Networking Activity

Resilience and Reliance: Finding Balance and Leading During Crisis **9:00am - 10:00am**

Moderator

- Kara Van Dam, Vice President and Dean, School of Arts and Sciences, University of

Tuesday, October 13

Maryland Global Campus

Speakers

- Christine Lustik, Owner, Mindfulness in Organizations
- Russ Poulin, Executive Director, WCET

Join our mindfulness expert who will provide pragmatic strategies for leading during a time of crisis, and supporting teams who are overwhelmed and carrying the burden of their students' traumas.

General Session

Break/Exhibit Hall

10:00am - 10:30am

Breakout Sessions

Technology to Address Behavioral Health Support for Students

10:30am - 11:15am

Moderator

- Lujean Baab, Senior Director, Grants and Awards: TLOS, Virginia Tech

Speaker

- Nathaan Demers, Vice President and Director of Clinical Programs, Grit Digital Health

While many campuses have dialed in how to provide course instruction virtually, many continue to struggle with the implementation of student supports. How do we ensure that we are meeting students' needs outside of the classroom while engaging in virtual learning? And how do we ensure we are reaching students from historically marginalized populations, who might be disproportionately impacted by this shift, during this time? This session will provide an overview of several research back platforms that can support campuses in meeting these essential needs including: YOU at College - a digital mental health and well-being platform; Nod - an app designed to help specifically address the issue of loneliness and its negative mental health correlates; and FindHelpNow - a tool to find resources for any type of crisis on campus.

Breakout Session

Gateway Courses: From Obstacle to Opportunity

10:30am - 11:15am

Moderator

- Laura DaVinci, Assistant Director, Every Learner Everywhere, WCET

Speakers

- Barbara Means, Executive Director, Learning Sciences Research, Digital Promise
- Laura Niesen de Abruna, Provost, York College of Pennsylvania
- Megan Tesene, Associate Director, Personalized Learning Consortium, Association of Public & Land-grant Universities

Gateway courses are well-known to exacerbate inequities for Black, Latinx, Indigenous, poverty-affected, and first-generation students. Colleges and universities have long struggled with implementing practices that offer meaningful improvements in the educational experiences of these students. Join us for a moderated conversation with experts from the Every Learner Everywhere network to learn about the network's approach to addressing this complex problem. Attendees will learn about promising and evidence-based practices including how

Tuesday, October 13

digital learning technologies can alleviate inequities embedded in the teaching and learning experience and enhance the quality of gateway courses.

Breakout Session

Break

11:15am - 11:30am

I Want to Discuss...Crowdsourced Topic

11:30am - 12:15pm

Suggest a topic on days 1 & 2 for discussion in small groups.

Open Forum

Break/Exhibit Hall

12:15pm - 1:00pm

Networking Activity: Mindfulness Workshop

3:00pm - 4:00pm

- Christine Lustik, Owner, Mindfulness in Organizations

We are so fortunate to have Christine Lustik to take us on a mindfulness journey, help us reflect on the work we've achieved thus far, and provide some tangible skills for incorporating mindfulness into our lives.

Networking Activity

Wednesday, October 14

Post Daily Reflections and Follow Up Questions

8:00am - 5:00pm

Post to Discussion

Exhibit Hall

8:00am - 5:00pm

Be sure to stop by the virtual exhibit hall to connect with our amazing sponsors and exhibitors! Earn 25 gamification points per exhibitor, visit each booth for their unique code.

Networking Activity: Walk and Talk

8:30am - 9:00am

Networking Activity

Straighterline helps colleges **grow enrollments** and **retain and graduate more students** through our private-labeled Academy platform

No upfront or ongoing costs to your school

straighterline partners.straighterline.com



Wednesday, October 14

Research-Based Solutions and Strategies for Student Support

9:00am - 10:00am

Moderator

- Mary Ellen Dello Stritto, Director of the Ecampus Research Unit, Oregon State University Ecampus

Speakers

- Tanya Joosten, Director, Digital Learning Research and Development, University of Wisconsin-Milwaukee and the National Research Center for Distance Education and Technological Advancements (DETA)
- Jessica Knott, Service Strategy Team Manager, Michigan State University
- Newton Miller, Associate Dean of the College of Education, Ashford University
- Russ Poulin, Executive Director, WCET

The panel will share data around student readiness for online learning, technology and access divides, and effective student support.

General Session

Break/Exhibit Hall

10:00am - 10:30am

Focus Area Work

10:30am - 12:00pm

Group work on developing resources. Mix of synchronous and asynchronous participation.

Work Groups

Networking Activity: Virtual Lunch

12:00pm - 1:00pm

Eating at your desk is no longer frowned upon! Bring your sammy and other brown bagged goodies to our networking lunch. Groups will be randomly assigned. Enable video to mimic the true conference experience without the weird butter pats and hard rolls.

Networking Activity

Focus Area Work

1:00pm - 2:00pm

Group work on developing resources. Mix of synchronous and asynchronous participation.

Work Groups

Break/Exhibit Hall

2:00pm - 2:30pm

Networking Activity: Movie Reviews

3:00pm - 4:00pm

WCET has several movie buffs on staff (if you aren't subscribed to wcetMIX you are missing our weekly reviews!). Join us to discuss newly released flops and blockbusters in film and TV. Cobra Kai anyone? Video and popcorn are recommended.

Networking Activity

Thursday, October 15

Thursday, October 15

Post Daily Reflections and Follow Up Questions 8:00am - 5:00pm

Post to Discussion

Exhibit Hall 8:00am - 5:00pm

Be sure to stop by the virtual exhibit hall to connect with our amazing sponsors and exhibitors! Earn 25 gamification points per exhibitor, visit each booth for their unique code.

Networking Activity: Virtual Coffee 8:30am - 9:00am

Networking Activity

10 Traits of Inclusive Leaders 9:00am - 10:00am

Moderator

- Darcy Hardy, Associate Vice President & Client Success Director, Blackboard

Speakers

- Russ Poulin, Executive Director, WCET
- Lucy Sanders, CEO and Co-Founder, National Center for Women & Information Technology (NCWIT)

Creating systemic change takes awareness and strategic action. The National Center for Women in Technology will guide the audience through the process of understanding norms, values, and key influences on creating inclusive cultures.

General Session

Break/Exhibit Hall 10:00am - 10:30am

Focus Area Work 10:30am - 11:15am

Group work on developing resources. Mix of synchronous and asynchronous participation.

Work Groups

Break 11:15am - 11:30am

Check In: What Have We Accomplished, and Where Are We Headed? 11:30am - 12:15pm

- Russ Poulin, Executive Director, WCET

What have we accomplished, and where are we headed? What reflections, follow up questions, and advice do you have?

Open Forum

Break/Exhibit Hall 12:15pm - 1:00pm

Thursday, October 15

Focus Area Work

1:00pm - 3:00pm

Go to the Work Groups area to join your group. Finalize group work on developing resources. Mix of synchronous and asynchronous participation. Group work will be shared at a date to be determined.

Work Groups

Networking Activity: Final Social

3:00pm - 4:00pm

Toast with your breakout hosts. Share your favorite experience with your group and enjoy the final time to connect before we jump into Seminar 2 in November. It's not a toast without your favorite beverage (or sourdough) and your shining face on video! For added fun, challenge your colleagues with virtual trivia.

Networking Activity