



Community

Equity

Policy

Practice

[wcet.wiche.edu](http://wcet.wiche.edu)

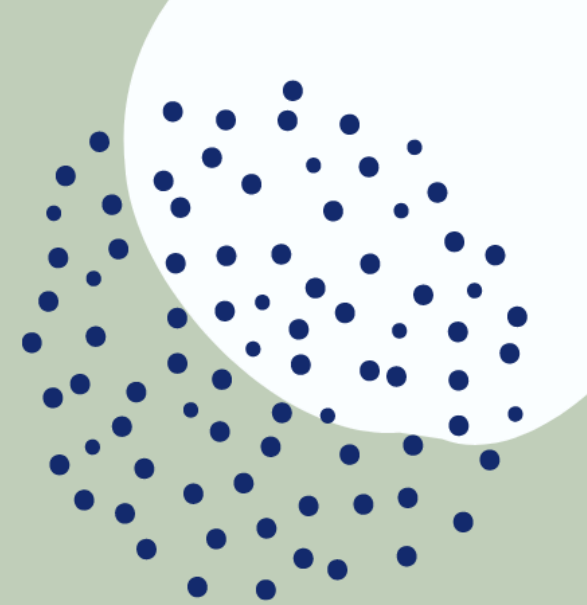
# Welcome to today's #WCETWebcast

**October 12, 2022**

The webcast will begin shortly.

There is no audio being broadcast at this time.

An archive of this webcast will be available on the WCET website next week.

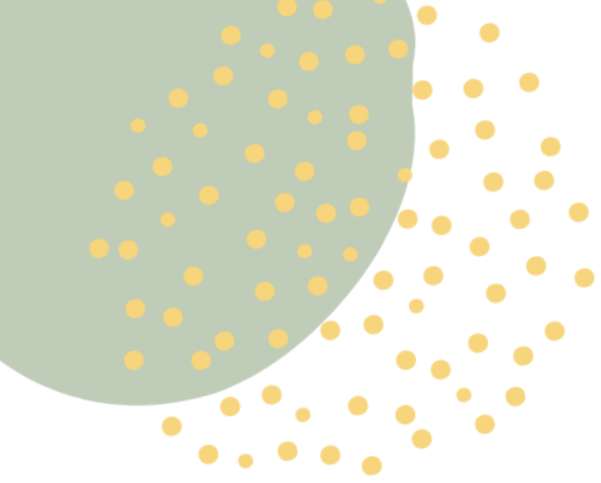




# Microcredentials in Higher Education— Strategizing the Journey at Your Institution

October 12, 2022





*Use the question box for questions and information exchange.*

*Slides and shared resources will be emailed to attendees next week.*

*Slides can be downloaded via the link in chat.*

*Follow the Twitter feed: #WCETWebcast.*

# Welcome!



Megan Raymond  
Senior Director, Membership & Programs

WCET

[mraymond@wiche.edu](mailto:mraymond@wiche.edu)

[@meraymond](#)



Hosted in partnership with:

---

LearningMate<sup>TM</sup>



# Questions from the Audience

*If you have a question during  
the presentation, please add it  
to the question box.*

*We will monitor the question  
box and have time for Q&A at  
the end of the webcast.*



# Moderator

**Kate Parker**

Vice President, Content Services

LearningMate



# Speakers



**Julie Beggs**

Dean, Workforce and  
Community Programs

Arapahoe Community College



**Noah Geisel**

Micro-credentials Program  
Manager, Office of the Registrar

University of Colorado Boulder



**Laura Pedrick**

Executive Director, UWM  
Online

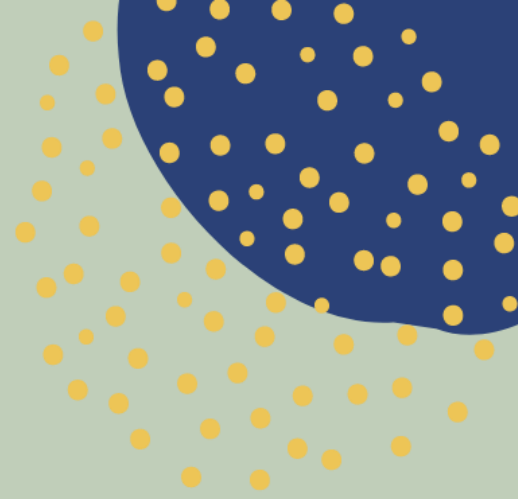
University of Wisconsin  
Milwaukee







# Questions from the Audience



# Resources to Get Started

- 1EdTech Digital Badge Program Considerations: <https://www.imglobal.org/badges/checklist>.
- AACRAO Alternative Credentials Considerations and Best Practices: <https://www.aacrao.org/resources/newsletters-blogs/aacrao-connect/article/alternative-credentials-considerations-guidance-and-best-practices>.
- Digital Credentials Institute at Madison College: <https://dci-madisoncollege.org>.
- Education Design Lab: <https://eddesignlab.org>.
- SUNY Microcredentials: <https://www.suny.edu/microcredentials>.
- UNC Chapel Hill Quick Start Guide: [https://dll.unc.edu/wp-content/uploads/sites/1206/2022/03/uncch-dll\\_badges\\_quick\\_start\\_guide.pdf](https://dll.unc.edu/wp-content/uploads/sites/1206/2022/03/uncch-dll_badges_quick_start_guide.pdf)
- UPCEA Hallmarks of Excellence in Credential Innovation: <https://upcea.edu/credentialhallmarks>.
- NACE Competencies for a Career-Ready Workforce: <https://www.naceweb.org/uploadedfiles/files/2021/resources/nace-career-readiness-competencies-revised-apr-2021.pdf>.



# Contact Information

---



Julie Beggs

[julie.beggs@arapahoe.edu](mailto:julie.beggs@arapahoe.edu)



Noah Geisel

[noah.geisel@colorado.edu](mailto:noah.geisel@colorado.edu)



Kate Parker

[kate.parker@learningmate.com](mailto:kate.parker@learningmate.com)



Laura Pedrick

[lpedrick@uwm.edu](mailto:lpedrick@uwm.edu)

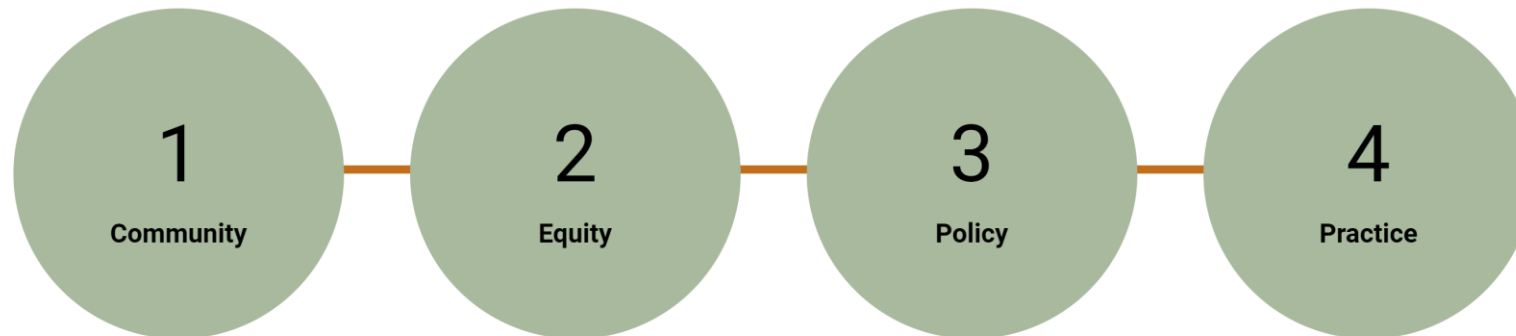


# Learn more and stay connected:

Visit [wcet.wiche.edu](https://wcet.wiche.edu) to explore our Policy and Practice work, Events, Membership, and Sponsorship.

Learn more about the benefits of joining our community: [wcet.wiche.edu/join-us](https://wcet.wiche.edu/join-us)

WCET is the leader in the practice, policy, & advocacy of digital learning in higher education.



# Additional Information and Resources

The webcast recording and additional resources will be available in the next week:

[wcet.wiche.edu/events/webcasts](http://wcet.wiche.edu/events/webcasts).



Join us *next week* at the  
WCET Annual Meeting!

Learn more and register:

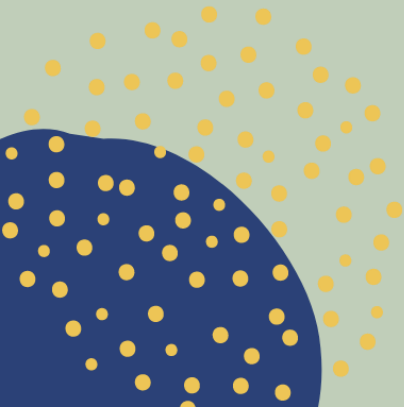
[bit.ly/346rTS2](https://bit.ly/346rTS2)























# Thank you WCET Annual Sponsors

Learn more:

[wcet.wiche.edu/sponsorship/wcet-sponsors](http://wcet.wiche.edu/sponsorship/wcet-sponsors)

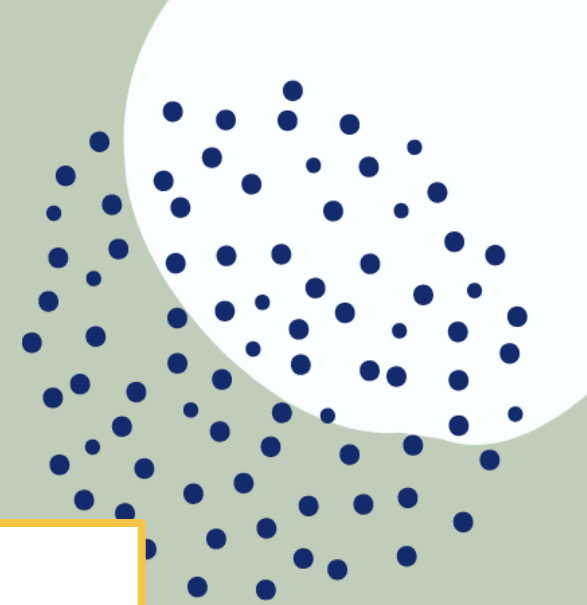


<hr/>  <hr/>	 <hr/>	 <hr/>
 <hr/>	 <hr/>	 <hr/>
 <hr/>	 <hr/>	 <hr/>
 		 <hr/>
 <hr/>		 <hr/>
 <hr/>	 <hr/>	 <hr/>
 <hr/>		 <hr/>
	 <hr/>	



Thank you Supporting Members for  
your commitment to WCET and digital  
learning.

The California State University  
Colorado State University  
Michigan State University  
The University of Arizona  
University of Florida





*Thank you!*  
*wcet.wiche.edu*

