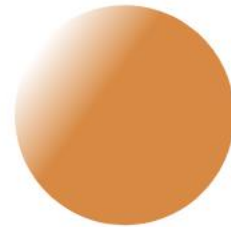


Welcome to Today's WCET Webcast



OCTOBER 5, 2023

The webcast will begin shortly.

There is no audio being broadcast at this time.

An archive of this webcast will be available on the WCET website next week.



Community

Equity

Policy

Practice

wcet.wiche.edu



wcet

Webcast

Tools and Strategies for Infusing Academic Integrity in a World of Artificial Intelligence

October 5, 2023

Hosted in partnership with:



Honorlock™

Welcome!

- Slides can be downloaded via the link in chat.
- Please use the **Question** box for questions and **Chat** for other information exchange.
- Follow the Twitter feed: #WCETWebcast.
- Slides, recording, and shared resources will be emailed to attendees.



Megan Raymond

Senior Director, Membership & Programs
WCET

mraymond@wiche.edu

[@meraymond](#)

Today's Moderator

GLORIA NILES

Director of Online Learning,
University of Hawai'i System

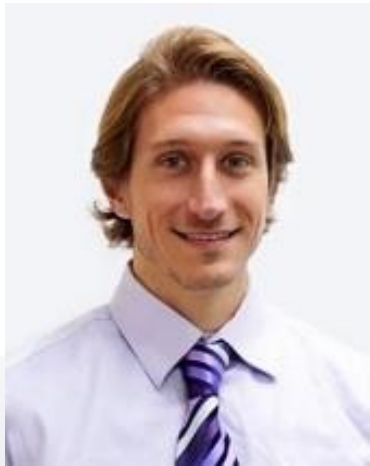
giles@hawaii.edu

[@teachtoreachme](#)

[LinkedIn Profile](#)



Speakers



JORDAN ADAIR

VP of Product, Honorlock



CAMILLA ROBERTS

Director - Honor and Integrity
System, Kansas State University |
President, International Center
for Academic Integrity



JUDITH SEBESTA

Founder and Principal,
Sebesta Education
Consulting LLC

Definition: Academic Integrity

Academic integrity is a code of ethics for students to follow in their courses, exams, and overall behavior. Each student's work should be their own. Students complete their own assignments, take their own exams, and earn their own grades.

[What is Academic Integrity?](#), Honorlock Blog, October 2021

Definition: Artificial Intelligence

Intelligence—perceiving, synthesizing, and inferring information—demonstrated by machines, as opposed to intelligence displayed by humans and non-human animals. It is an umbrella term over generative AI, natural and large language models, and machine and deep learning. AI in an instructional environment may include (but is not limited to) adaptive and automated assessments, practice opportunities, and personalized tutoring and feedback. In addition, AI tools are being used to generate content, write code, conduct research, resolve accessibility issues, reconfigure writing processes, and detect plagiarism. AI tools also can be used to provide learning support in such forms as identifying at-risk students, recommending courses, increasing motivation, and predicting student performance

[Supporting Instruction and Learning Through Artificial Intelligence](#)

Definition: Generative AI

A form of artificial intelligence that can create new content such as text, visual images, code, audio, or video because its neural networks have been trained on a large amount of data. Outputs might include digital art, essays, short answers, blog posts, computer code, press releases, and other types of novel content.

[Supporting Instruction and Learning Through Artificial Intelligence](#)

Definition: Large Language Model

A form of text-based generative AI (e.g., ChatGPT) that is trained on an enormous amount of text so that it can predict and create a given sequence of words. This capability allows the model to "understand" inquiries and replicate human language in a largely coherent (if not always accurate) way.

[Supporting Instruction and Learning Through Artificial Intelligence](#)

AI Policy Statement Template

- PART 1: Introduction & purpose
- PART 2: What are AI tools?
- PART 3: Acceptable AI use
- PART 4: The negative impact of using AI tools
- PART 5: AI Policy enforcement

[Honorlock's AI Policy Statement](#)

Questions from the Audience



Contact Information

- Jordan Adair / Honorlock
 - [X](#) | [LinkedIn](#) | [Facebook](#)
- Camilla Roberts
 - cjroberts@ksu.edu
- Judith Sebesta
 - judith@sebestaeducationconsulting.com | [X](#) | [LinkedIn](#)

Additional Information and Resources



wcet

Webcast

The webcast recording and additional resources will be available in the next week: wcet.wiche.edu/events/webcasts.

Learn more and stay connected:

Visit wcet.wiche.edu to explore our Policy and Practice work, Events, Membership, and Sponsorship.

Learn more about the benefits of joining our community: wcet.wiche.edu/join-us

WCET is the leader in the practice, policy & advocacy of digital learning in higher education.



Community

Equity

Policy

Practice

Upcoming WCET Events

Learn more and register: wcet.wiche.edu/events

- “Waze” to Find the Detours and Fast Lanes to Understand New U.S. Department of Education Guidance and Regulations – November 15, Noon MT
Exclusive event for WCET and SAN members
- Accessibility Considerations in Open Education – November 16, Noon MT



▽ WCET 35th Annual Meeting

WCET Annual Meeting
October 25-27



ASWE: Evolve
October 26-28



There's still time to join us in New Orleans!
bit.ly/WCET2023AM

Thank you, WCET Annual Sponsors

Learn more:

[wcet.wiche.edu/
sponsorship/wcet-sponsors](http://wcet.wiche.edu/sponsorship/wcet-sponsors)

Champion Sponsor



Leader Sponsor



Friend Sponsor



Supporter Sponsor



Thank you, Supporting Members

Brigham Young University

The California State University

Colorado State University

Michigan State University

The University of Arizona

University of Florida

Supporting members make an additional investment and support WCET's mission to advance the effective use of technology for teaching and learning.

Thank you for attending!

wcet.wiche.edu

